



Item#: \_\_\_\_\_  
 Quantity: \_\_\_\_\_  
 Model #: S-500  
 Project #: \_\_\_\_\_

## Stainless Steel Silverware Cylinder



**Model #: S-500**  
Lifetime Warranty

**Standard Features:**

- High-capacity silverware cylinder
- Deep-drawn, straight-wall design allows for highest capacity holding up to 50% more than tapered imports
- Fits a maximum of (6) dozen standard flatware forks per cylinder
- The straight wall design lessens jamming of flatware
- 3.75" wide-footed base for stability
- Made from 18-gauge, 304 Stainless Steel
- High-quality electro-polish finish
- Formed with a 0.1875" high turned-down beveled lip for strength and a clean finished look
- Total height of 5.375"
- Net clearance of 5.1875"
- Fits a 4 1/32" cutout
- NSF approved
- Made in the U.S.A.



**Product Specification:**

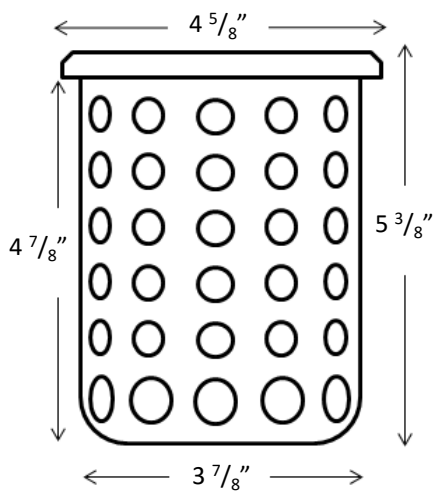
Steril-Sil model #S-500 High-Capacity Silverware Cylinder. Units is made from 18-gauge, 304 series stainless steel with an electro-polish finish, NOT a brushed finish. Units are deep-drawn with straight walls having a 3.75" wide-footed base to fit a maximum of (6) dozen standard flatware forks. Unit formed with a 0.1875" high turned-down lip. The total height is not to exceed 5.375" with a net clearance of 5.1875" and fit a 4 1/32" cutout. NSF approved. Made in the U.S.A.

**Notes:**

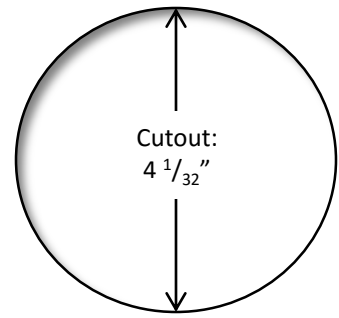
**Steril-Sil Company, LLC**  
 Phone: 800-784-5537  
 Fax: 617-739-5063  
 Email: quotes@sterilsil.com  
 www.sterilsil.com



## Stainless Steel Silverware Cylinder



Model #: S-500



Model #: S-500 Cutout  
(Not to scale)

### Stainless Steel Silverware Cylinders

Designed for use with Steril-Sil silverware dispensers, sold separately

Model #	Description	Cutout	Gauge	Height
S-500	Stainless steel high capacity, straight-walled silverware cylinder	4 1/32"	18 ga.	5.375"

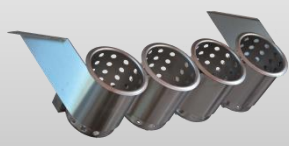
#### Available Accessories:



**TC-8**  
Countertop Dispenser



**E1-BS60E-SS**  
E1 Drop-In Silverware Basket



**UB-4SS**  
Under-Bar Dispenser



**HKS-1**  
Cantilever Dispenser

See the classic dispenser, basket and E1 Silverware Handling System pages for additional accessories