



Item#: _____
 Quantity: _____
 Model #: SK-
 Project #: _____

Mobile Silverware Soak Sinks



Model #: SK-2222



Model #: SK-2025

Standard Features:

- Heavy duty 14-gauge all-welded construction
- Sink top's rolled edge prevents water from collecting and wicking to worker pant legs
- Four-way creased sink bottom
- Twist-lever drain
- (4) locking, non-marking casters
- 304 stainless steel
- NSF approved
- Made in the U.S.A.



Product Specification:
 Steril-Sil model #SK- Heavy Duty Mobile Silverware Soak Sink. 14-gauge 304 stainless steel all welded construction includes rolled-edge lip, four-way creased bottom, twist-lever drain and non-marking locking casters. NSF approved. Made in the U.S.A.

Notes:

Steril-Sil Company, LLC
 Phone: 800-784-5537
 Fax: 617-739-5063
 Email: quotes@sterilsil.com
 www.sterilsil.com



Mobile Silverware Soak Sinks (cont'd)



Model #: SK-2222



Model #: SK-2025

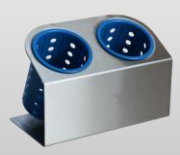


Mobile Silverware Soak Sinks

Heavy Duty Mobile Soak Sinks for the Best Warewashing Results

Model #	Description	Inside Bowl Dimensions			Overall Dimensions		
		Length	Width	Height	Length	Width	Height
SK-2222	Flat rack mobile soak sink. For use alone or with 20"x20" dish rack.	22.00"	22.00"	10.00"	25.00"	25.00"	18.00"
SK-2025	Extra large and deep heavy duty mobile soak sink. For use alone or with 20"x20" dish rack.	20.50"	25.00"	12.00"	28.00"	23.75"	21.00"

Available Accessories:



HKS-2
Cantilever Dispenser
with RP-25 Series Cylinders



E1-STE-2H
E1 System Sorting Table



S-500
High Capacity Stainless
Steel Silverware Cylinder



BS-6
6-Hole Silverware
Cylinder Basket