



Item#: \_\_\_\_\_  
 Quantity: \_\_\_\_\_  
 Model #: E1-ENC-  
 Project #: \_\_\_\_\_

## E1 Enclosed Dispensing Carts



**Model #: E1-ENC24-2V**  
 (Shown with accessories)  
 E1 System Patent Pending

**Standard Features:**

- E1 System enclosed dispensing cart
- Works exclusively with the Steril-Sil E1 Silverware Handling System
- Configurable design with the use of E1 Inserts allows adaptation for changing needs throughout the day including:
  - Silverware dispensing
  - Napkin dispensing
  - Straw dispensing
  - Various hotel pan configurations
- Enclosed cart design for storage at the point of usage.
- Hinged doors
- Integrated handle grasps
- (1) door lock per door
- (4) locking, non-marking casters
- (4) corner bumpers
- All welded 304 stainless steel construction
- Made in the U.S.A.

**Product Specification:**

Steril-Sil model #E1-ENC  Enclosed Dispensing Cart. Works exclusively with the Steril-Sil E1 Silverware Handling System and accepts E1 System inserts. Configurable dispensing system for silverware, napkins, straws, condiments and more. Includes an enclosed storage area with hinged doors, (1) door lock per door, four (4) corner bumpers, four (4) locking, non-marking casters. All welded 304 stainless steel construction. Made in the U.S.A.

**Notes:**

**Steril-Sil Company, LLC**  
 Phone: 800-784-5537  
 Fax: 617-739-5063  
 Email: quotes@sterilsil.com  
 www.sterilsil.com



## E1 Enclosed Dispensing Carts (cont'd)



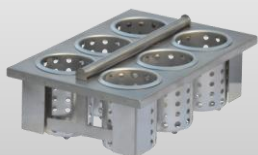
Model #: E1-ENC24-2V    Model #: E1-ENC36-3V    Model #: E1-ENC36-1V1HP    Model #: E1-ENC48-4V

### E1 Enclosed Dispensing Carts

Designed for use with the E1 Silverware Handling System

Model #	Description	Overall Dimensions				Capacity	
		Length (w/ bumpers)	Width (w/ bumpers)	Counter Height	Overall Height	E1 Inserts	Hotel Pans
E1-ENC24-2V	2-hole E1 dispensing cart holds (2) E1 inserts vertically	25.25"	25.25"	30.25"	39.00"	2	0
E1-ENC36-3V	3-hole E1 dispensing cart holds (3) E1 inserts vertically	35.25"	25.25"	30.25"	39.00"	3	0
E1-ENC36-1V1HP	1-hole E1 dispensing cart holds (1) E1 inserts vertically and (1) full-size hotel pan and any fractional combination using adapters	35.25"	25.25"	30.25"	39.00"	1	1
E1-ENC48-4V	4-hole E1 dispensing cart holds (4) E1 inserts vertically	48.00"	25.25"	30.25"	39.00"	4	0

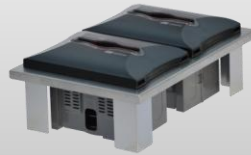
### Available Accessories:



**E1-BS6OE-SS**  
E1 Drop-In Silverware Basket



**E1-XHP-1VH**  
E1 Half-Size Hotel Pan Insert



**E1-2N5-1VH**  
E1 Dual Napkin Dispenser



**E1-FTA-1V**  
E1 Flat Top Adapter

See the E1 Accessories page for additional options and details