

2023 Product Menu



Cylinders and Containers



S-500 - Stainless steel cylinder. The silverware cylinder was invented by the Steril-Sil Company in 1938. Our stainless-steel version is 18-gauge 304A stainless with an electro-polish finish. And like all Steril-Sil products, it is made in the U.S.A.



N-200 (white) and G-300 (gray)

Nylon Series - Nylon high-temp cylinders, withstand temperatures up to 300°F.



RP-25 Series - Plastic colored cylinders

RP-25-WHITE, GRAY, BLACK, PURPLE, VIOLET, BLUE, HUNTER, LIME, YELLOW, ORANGE, RED and BROWN



PN-1 Series - Suction cup multi-purpose cylinders.

PN1-WHITE, GRAY, BLACK, PURPLE, VIOLET, BLUE, HUNTER, LIME, YELLOW, ORANGE, RED and BROWN



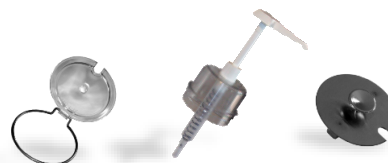
SC-750 - Stainless steel 30-ounce container.

Steril-Sil containers are interchangeable with our silverware cylinders. Our stainless-steel model is 18-gauge 304A stainless with an electro-polish finish and is made in the U.S.A.



PC-700 Series - Plastic colored 30-ounce containers.

PC-700-BLACK, GRAY, WHITE, BLUE, RED



HC-20-X

DC-61, DC-50
DC-25, DC-HP

LO-10

30 Ounce Container Accessories - For use with all Steril-Sil 30-ounce containers. HC-20-X hinged lid, DC-61 domed cover with pump and LO-10 stainless steel lift-off cover.

Non-Insulated Dispensers



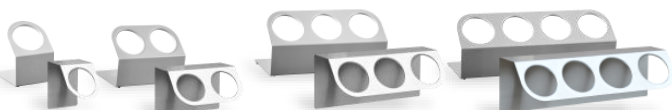
LTC-2 LTC-3 LTC-4 LTC-5 LTC-6

LTC Series - In-line countertop dispensers.



TC-4 TC-6 TC-8 TC-10 TC-12 TC-16 TC-24

TC Series - Multi-row countertop dispensers.



HKS-1 HKS-2 HKS-3 HKS-4

HKS Series - Countertop or wall-mount dispensers.



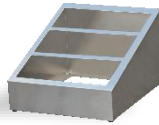
Non-Insulated Dispensers



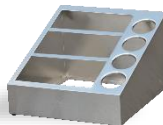
VTC-3SP-4



VTC-1HP-4



VTC-9SP



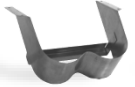
VTC-12NP-4

VTC Series – Condiment and beverage support dispensers using hotel pans and cylinders and 30oz. containers.

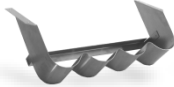


WSA-1HP

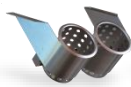
WSA Series – Wall shelf with full-size pan cutout.



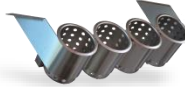
UB-2



UB-4



UB-2SS



UB-4SS

UB Series – Underbar / under-counter dispensers for undercounter silverware and condiment dispensing.



LID-301



LID-305

LID Series – Countertop or wall-mount lid dispensers.

Dollies



MCD-301



MCD-301-H

MCD Series – Milk crate dollies, all stainless-steel construction, solid bottom to contain spills and leaks. Available with or without handle.



DRD-301



DRD-301-H

DRD Series – Dish rack dollies, all stainless-steel construction, center drain to allow water to drain while dishes and glassware dries. Available with or without handle.

Silverware Handling



BS-4



BS-4L

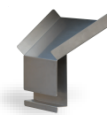
BS Series – Silverware baskets for use with Steril-Sil cylinders and containers.



SK-2222



SK-2025



SK-CHUTE

SK Series – Soak sinks with locking casters and twist lever drain and optional silverware chute.



STE-44-BN



STE-44-BS

STE Series – Heavy duty mobile sorting stations with open bottom for soak sink storage.



LSS-44-BN



LSS-44-BS

LSS Series – Heavy duty complete mobile sorting stations includes sorting table and 22 x 22 soak sink.

Tray and Silverware Carts



CRT24-1HP

Holds (1) full-size pan or fractional combinations

CRT24-12SS

Includes (12) Stainless steel S-500 cylinders

CRT24-12RP-WHITE, GRAY, BLACK, PURPLE, VIOLET, BLUE, HUNTER, LIME, YELLOW, ORANGE, RED, BROWN

Includes (12) RP-25 plastic cylinders

CRT24 Series – 24" Tray, silverware and plasticware carts. Include back and side panels, (4) locking casters, (4) corner bumpers and integrated handles. 'SS' model include (12) S-500 stainless steel cylinders. 'RP' models include (12) RP-25 plastic cylinders.



CRT36-5TP

Holds (5) 1/3 size pans or fractional combinations

CRT36-18SS

Includes (12) S-500 stainless steel cylinders

CRT36-18RP-WHITE, GRAY, BLACK, PURPLE, VIOLET, BLUE, HUNTER, LIME, YELLOW, ORANGE, RED, BROWN

Includes (18) RP-25 plastic cylinders

CRT36 Series – 36" Tray, silverware and plasticware carts. Include back and side panels, (4) locking casters (4) corner bumpers and integrated handles. 'SS' model include (18) S-500 stainless steel cylinders. 'RP' models include (18) RP-25 plastic cylinders.

Utility Carts



UTC-202

UTC 200 Series – Medium duty utility carts, all stainless-steel construction, includes (4) corner bumpers and (2) locking casters, 500 lbs. capacity.

UTC-203

UTC-302

UTC 300 Series – Heavy duty utility carts, all stainless-steel construction, shelves with reinforced hat channel, includes (4) corner bumpers and (2) locking casters, 1,000 lbs. capacity.

UTC-303

Bus Carts



BUS-302

BUS 300 Series – Heavy duty bussing carts, all stainless-steel construction, includes (4) corner bumpers and (2) locking casters, bus tubs and hanging trash can. Based on the UTC 300 series.

BUS-303

Mobile Trash & Recycling Counters



MTC36-1



MTC56-2



MTC83-3

MTC Series – Large volume, mobile trash and recycling counters. Heavy duty, all stainless-steel construction, includes 40-gallon cans with dollies.



MTC48-1-DMP



MTC66-2-DMP

MTC-DMP Series – Large volume, heavy duty, mobile trash and recycling counters with dump basin for liquid disposal. Includes 40-gallon cans with dollies and 7-gallon mobile tank.



TTR48-L



TTR48-R

TTR Series – Large volume, mobile trash and recycling counters. Heavy duty, all stainless-steel construction, includes 40-gallon cans with dollies and lower side tray return shelf.



MTC-CAN-40D

MTC Accessory – Extra 40-gallon trash can with dolly for the MTC and TTR series mobile trash and recycling counters.



Glass Rack Lowerator



LWR-203

LWR Series – Self-storing 20" x 20" rack lowerator. Adjustable shelf tension for dispensing heavy and light items. Optional left- or right-hand hinged door is available, shown with optional laminate.

Mobile Counters



ENC24-12SS
Includes (12) S-500
stainless-steel cylinders



ENC24-12RP-WHITE, GRAY, BLACK, PURPLE, VIOLET, BLUE, HUNTER, LIME, YELLOW, ORANGE, RED, BROWN
Includes (12) RP-25 plastic cylinders.

ENC24 Series – 24" enclosed base mobile silverware counter. Includes 8" tray slide, locking door, (4) locking casters, (4) corner bumpers and integrated handles. 'SS' model include (12) S-500 stainless steel cylinders. 'RP' models include (12) RP-25 plastic cylinders.



ENC36-18SS
Includes (18) S-500
stainless-steel cylinders



ENC36-18RP-WHITE, GRAY, BLACK, PURPLE, VIOLET, BLUE, HUNTER, LIME, YELLOW, ORANGE, RED, BROWN
Includes (12) RP-25 plastic cylinders.

ENC36 Series – 36" enclosed base mobile silverware counter. Includes 8" tray slide, locking door, (4) locking casters, (4) corner bumpers and integrated handles. 'SS' model include (18) S-500 stainless steel cylinders. 'RP' models include (18) RP-25 plastic cylinders.



ENC24-1HP
24" mobile counter
holds (1) full-size pan or
fractional combinations



ENC36-5TP
36" mobile counter holds
(5) 1/3 size pans or
fractional combinations



E1-ENC36-1V1HP
36" mobile counter holds
(1) E1 System insert and
(1) full size pan



ENC48-2HP
48" mobile counter holds (2)
full size hotel pans or
fractional combinations



E1-ENC48-2V1HP
48" mobile counter holds (2)
full size hotel pans or
fractional combinations

ENC Food Pan Series – Mobile counters with cutouts to fit industry standard food pans. Great for bulk silverware dispensing, condiment counters, beverage support and more. Includes 8" tray slide, locking door, (4) locking casters, (4) corner bumpers and integrated handles.



ENC24-FLAT
24" mobile counter with
locking door



ENC36-FLAT
36" mobile counter with
locking door



ENC48-FLAT
48" mobile counter with
locking door

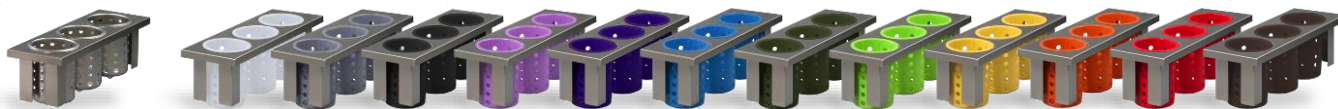


ENC60-FLAT
60" mobile counter with
locking door

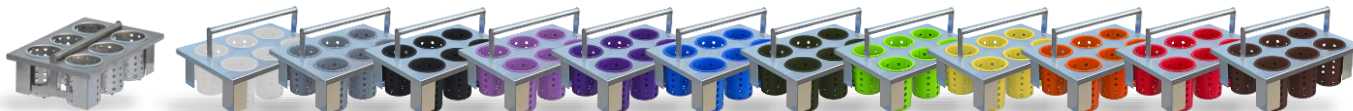
ENC Flat-Top Series – ENC mobile counters with flat work-top include locking door(s), (4) locking casters, (4) corner bumpers and integrated handles. SS model includes (18) S-500 stainless steel cylinders. RP model includes (18) RP-25 plastic cylinders.



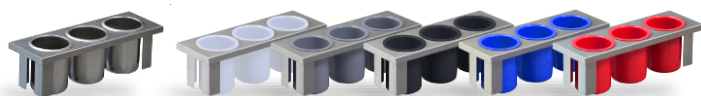
E1 System - Inserts



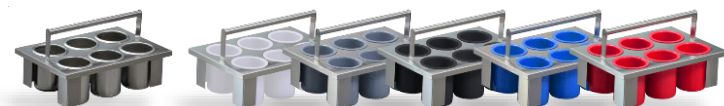
E1-BS3OE-SS **E1-BS3OE-RP...** WHITE, GRAY, BLACK, VIOLET, PURPLE, BLUE, HUNTER, LIME, YELLOW, ORANGE, RED and BROWN
3-hole inserts, half-size insert (05V) includes perforated silverware cylinders.



E1-BS6OE-SS **E1-BS6OE-RP...** WHITE, GRAY, BLACK, VIOLET, PURPLE, BLUE, HUNTER, LIME, YELLOW, ORANGE, RED and BROWN
Drop-in baskets with cylinders, 6-hole, single-size insert (1V) includes perforated silverware cylinders.



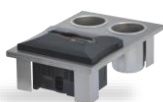
E1-BS3OE-SS **E1-BS3OE-PC...** WHITE, GRAY, BLACK, BLUE, RED
3-hole inserts, half-size insert (05V) includes solid 30-ounce containers.



E1-BS6OE-SC-750 **E1-BS6OE-PC...** WHITE, GRAY, BLACK, BLUE and RED
Drop-in baskets, 6-hole, single-size insert (1V) includes solid 30-ounce containers.



E1-2N5-1VH
1V dual napkin



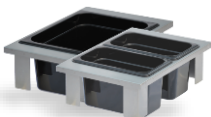
E1-1N52SD-1VH
1V napkin & straw



E1-1N51QP-1VH
1V napkin and 1/4-pan



E1-1N52NP-1VH
1V napkin & (2) 1/9-pans



E1-XHP-1VH
1V 1/2-size pan



E1-SLD-1VH
1V solid top/insert



E1-CLH-05VH
05V cup and lid holder

E1 System Inserts – The E1 System is the most versatile dispensing system in the foodservice industry. With inserts to solve countless scenarios, E1 System inserts can be used in a wide range of dispensing applications including countertop, drop-in countertop, carts and mobile counters.

Arrange and adjust inserts as needed. As dispensing requirements evolve, simply swap out an insert for one that best meets your needs. It's fast, simple and smart, saving you time and money.



E1 System - Inserts



E1-CND1-1V



E1-CND2-1V



E1-CND3-15V



E1-CND4-2V



E1-CND-7QT-15V
7 qt. condiment insert

Condiment inserts for use with 2.5- or 3.5-quart fountain jars and pumps.



E1-FTA-1V



E1-FTA-15V



E1-FTA-2V



E1-FTA-25V



E1-FTA-3V

Flat top adapter/inserts create a flat space for dispensing in angled dispensers, carts and mobile counters.



E1-FTA-2V-FOV
2V flat top adapter
with single overshef



E1-FTA-25V-DAOV
2.5V flat top adapter with double-
angled-overshef with baskets



E1-CLD-25V
2.5V cold merchandiser,
includes full-size insulated pan



E1-CLD-25V-DAOV
2.5V cold merchandiser with double-
angled-overshef and baskets



E1-RCS-1V



E1-RCL-1V



E1-RCL-2V



E1-2RCS-2V



E1-RCLRCS-3V

Trash, recycling and trash and recycling inserts each include either 4" or 8" round collars or combination of each. Each insert also comes with a 10.25 or 19-gallon trash can for use in the ENC series counters.



E1-RCL-2V-FOV
2V trash/recycling insert
with 8" collar, (1) 19-gallon
trash can and single
overshef tray return



E1-2RCS-2V-FOV
2V trash/recycling insert with
(2) 4" collars, (2) 10.25-gallon
trash cans and a single
overshef tray return



E1-RCLRCS-3V-FOV
3V trash/recycling insert with (1) 8"
and (1) 4" collar, (1) 19 and (1)
10.25-gallon trash can and a single
overshef tray return





E1 System - Dispensers



E1-CBD-1H

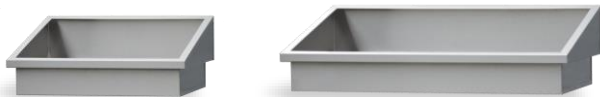
E1-CBD-1V

E1-CBD-2V

E1-CBD-25V

E1-CBD-3V

E1 System CBD Series Countertop Dispensers – Countertop dispensers hold E1 System inserts and include non-marking feet.



E1-DDA-2V

E1-DDA-3V

E1 System DDA Series Drop-in Angled Dispensers - Drop-in countertop dispensers. Clean step-in design eliminates need for flange. Each unit has an enclosed bottom to protect counter base from water and debris. When dropped-in, unit reveals one-inch in front while holding inserts at angle.



E1-DDF-05VH

E1-DDF-1VH

E1-DDF-2V

E1-DDF-3V

E1 System DDF Series Drop-in Flush Dispensers - Dispensers drop flush into a countertop, have an enclosed bottom and 1" protective flange at top. Designed to protect the counter interior from debris and the countertop from scratching.



E1-WDB-2H

E1 System Wall-Mount Dispenser - The "Dave Bonfield Special" wall-mount unit for either sorting when mounted behind a soiled dishtable or for dispensing in the servery. Holds two E1 System inserts in the horizontal position.



About the E1 System – Originally designed to be the most efficient silverware handling system in the foodservice industry, the E1 System is now also the most comprehensive and flexible dispensing system for foodservice operators. One countertop dispenser, cart or mobile counter can be changed up between meal parts to meet almost any need by simply changing out the E1 System inserts.

There is not one application that can't be solved with the over 60 inserts and 20+ dispensers, carts and counters. With them all, there are countless combinations you can create, your creativity is endless.

E1 System - Carts and Counters



E1-CRT24-2V



E1-CRT36-3V



E1-CRT36-1V1HP



E1-CRT48-4V

E1 System CRT Series Carts – Carts include back and side panels, (4) locking casters, corner bumpers and integrated handles. Tops are angled and accept E1 System inserts.



E1-ENC24-2V



E1-ENC36-3V



E1-ENC36-1V1HP



E1-ENC48-4V



E1-ENC60-5V

E1 System ENC Series Mobile Counters – Mobile counters include 8" flat trayslide, locking doors, (4) locking casters, corner bumpers and integrated handles. Tops are angled to accept E1 System inserts.

E1 System – Silverware Handling



E1-STE-2H



E1-STE-4H



E1-LSS-2H



E1-SK-2

E1 System Sorting Tables and Soak Sink – STE sorting tables and the LSS complete sorting station hold E1 System baskets in the elevated shelf to make sorting fast and easy. The E1-SK-2 soak sink fits two E1-BS6OE baskets and elevates the handles above the soak solution.



E1-BSC-16



E1-BSC-8

E1 System Soaking, Sorting and Storage – Basket storage cart holds E1-BS6OE baskets for drying, storage and transport and include a cart cover for overnight storage.



30 oz. Condiment Dispensing



SC-750 - Stainless steel 30-ounce container. Steril-Sil containers are interchangeable with our silverware cylinders. Our stainless-steel model is 18-gauge 304A stainless with an electro-polish finish and is made in the U.S.A.



PC-700-BLACK, GRAY, WHITE, BLUE, RED

PC-700 Series — Plastic colored 30-ounce containers.



CC-LTC-2 CC-LTC-3 CC-LTC-4 CC-LTC-5 CC-LTC-6

CC-LTC Insulated Series — Ice-cooled condiment dispensers with double walled, foamed in place construction, 5 and 6-hole units include drain.



CC-LTC-2SW, CC-LTC-3SW, CC-LTC-4SW, CC-LTC-5SW, CC-LTC-6SW

CC-LTC-SW Insulated Series — Complete insulated ice-cooled condiment dispensers include SC-750 30-ounce stainless steel containers and HC-20-X hinged lids.



TC-4SW

TC-6SW

TC-8SW

TC-SW Non-Insulated Series — Complete non-insulated condiment dispensers include SC-750 30-ounce stainless steel containers and HC-20-X hinged lids.



HC-20-X

DC-61, DC-50
DC-25, DC-HP

LO-10

30 Ounce Container Accessories — HC-20-X hinged lid, DC series domed covers with pumps and LO-10 stainless steel lift-off cover for use with Steril-Sil 30-ounce containers.



CC-LTC-2BR, CC-LTC-3BR, CC-LTC-4BR, CC-LTC-5BR, CC-LTC-6BR

CC-LTC-BR Insulated Series — Insulated ice-cooled bottle rail includes S-500 perforated stainless steel cylinders, 5 and 6-hole units include drain, speed-pour bottles not included.



LTC-6SW LTC-5SW LTC-4SW LTC-3SW LTC-2SW

LTC-SW Non-Insulated Series — Complete non-insulated condiment dispensers include SC-750 30-ounce stainless steel containers and HC-20-X hinged lids.

Fountain Jar Dispensing



IUD-366-BU

IUD Insulated Multi-Use Dispenser — Insulated ice-cooled unit utilizes either 1/6-size food pans or 2.5 qt. fountain jars. Unit is double-walled with foamed-in-place insulation to hold temperature for hours and prevent sweating and can be used as stationary support or is portable.



HC-J250



CLP-J250

Fountain Jar Accessories — Hinged cover with clear lid and the clear lid with pump work with 2.5- and 3.5-quart fountain jars.

Sanitizing Equipment



CHS-1



CHS-1-BLACK



CHS-1-BLUE



CHS-1-RED

CHS Series Hand Sanitizing Dispensers – Countertop, stand-mount or wall-mount use, each dispenser includes a stainless-steel base, non-marking feet, 3M VHB tape for wall-mount or stand-mount applications, 30-ounce container, domed cover and 1/16th ounce pump calibrated for use with hand sanitizer.



SAN-220

Glove & tissue holder



SAN-212

Wipe holder



SAN-230

Gallon jug holder

SAN-200 Series Sanitizing Dispensers – The SAN-200 series dispensers can be used in wall-mount or stand-mount applications, include both holes for fasteners and 3M VHB tape.



SAN-140

Floor stand sign



SAN-141

Trash can attachment

SAN-100 Series Attachments – The SAN-100 series attachments work exclusively with the SAN-132 floor stand by Steril-Sil.

SAN-301 Countertop Stand–

The SAN-301 countertop stand is designed for us with ONLY touchless/automatic hand sanitizer dispensers. The unit is made from 304 stainless steel, includes non-marking feet and 3M VHB tape for mounting of dispenser.



SAN-132 Universal Floor Stand

– The SAN-132 universal floor stand is double-sided, has a fully enclosed head, dual drip tray with hemmed edges for safety, is all stainless steel, includes a solid base, and assembles easy with the use of the (4) included cap nuts and includes 3M VHB tape for the installation of either dispensers by others or Steril-Sil branded dispensers.

Store Packaging



HKS-1-BLACK
HKS-1 with (1) RP-
25-BLACK cylinder



HKS-2-BLACK
HKS-2 with (2) RP-
25-BLACK cylinders



HKS-2-LIME
HKS-2 with (2) RP-
25-LIME cylinders



HKS-3-BLACK
HKS-3 with (3) RP-
25-BLACK cylinders



HKS-3-LIME
HKS-3 with (3) RP-
25-LIME cylinders



HKS-4-BLACK
HKS-4 with (4) RP-
25-BLACK cylinders



TC-6-BLACK
TC-6 with (6) RP-
25-BLACK cylinders

HKS Series – The simple and highly adaptable design of the HKS series creates sales opportunities for fast turns from a showroom floor. The HKS units can be used in both countertop and wall-mount applications and can dispense a wide range of items from silverware to sweeteners to condiment packs, straws and so much more. We add custom color labels to the front of each box when specified for store display keeping product new and helping to sell itself from the show floor.



PN1-WHITE, PN1-GRAY, PN1-BLACK, PN1-PURPLE, PN1-VIOLET, PN1-BLUE, PN1-HUNTER, PN1-LIME, PN1-YELLOW, PN1-ORANGE, PN1-RED and PN1-BROWN

PN1 Series – The simple and colorful designs of the PN1 units are eye catching and grab customers' attention. The unique packaging design allows PN1's to be displayed three different ways; to be displayed on a shelf or counter, to be hung from a store hook, or even displayed as it's intended use on glass door refrigerators or smooth stainless steel or painted surfaces throughout the showroom floor.

Terms and Conditions

Purchase Information: The Steril-Sil Company sells exclusively through foodservice equipment dealerships, products are not sold direct to a foodservice operator. For purchase information, contact your local foodservice equipment dealer or Steril-Sil sales team can direct you to a Steril-Sil dealer.

Prices: Prices and specifications are subject to change without notice and supersede previous price lists and specifications.

Terms: 1% 10 days, Net 30 days. F.O.B. Bowmansville, PA 17507. Open account with approved credit.

Custom Orders: Custom orders require 50% down, 50% due within terms. All custom items are non-returnable.

Ordering Data: Use model number and specification sheet descriptions to identify requirements.

Minimum Order Charge: Orders less than \$20 net will be charged a \$10 handling fee.

Broken Case Charge: Orders of quantities less than the case pack will be charged a \$10 broken case fee.

Shipping/Freight: Unless carrier is specified, we will ship by the best and most economical means as identified by Steril-Sil Company, LLC. Liftgate service, re-delivery and appointment fees are additional charges not covered by the basic shipping or freight cost. When incurred by the Steril-Sil Company, these costs will be added at the time of invoicing or may be invoiced separately at a later date if charges occurred in a freight adjustment.

Return Policy: New and unused products may be returned for credit within 60 days less a 25% restocking fee. All returned products must have prior approval and include the Return Authorization Number on the outside of all packages. Call for a Return Authorization Number prior to making a return. Upon receipt of the returned products and prior to issuing a credit less the 25% restocking fee, items will be inspected for new and undamaged condition. Damaged items will be assessed the invoiced net purchase price of the product. The determination of the condition of returned items will be made solely by the Steril-Sil Company. Return shipping damage is the responsibility of the shipper. Products are best shipped in their original cartons and packaging materials. All shipping charges must be pre-paid. Custom, discontinued and non-standard items may not be returned. The Return Policy is subject to change. The current Steril-Sil Company return policy shall be posted on the company website, www.sterilsil.com.

