



Item #: _____
 Quantity: _____
 Model #: E1-ENC -
 Project #: _____

E1 System Mobile Counters



Model #: E1-ENC24-2V
 (Shown with accessories)
 E1 System Patent Pending

Standard Features:

- E1-ENC mobile counter works exclusively with the Steril-Sil E1 System
- Configurable design with the use of E1 System inserts allows adaptation for changing needs throughout the day including:
 - Silverware dispensing
 - Napkin dispensing
 - Straw dispensing
 - Condiment packs and sweeteners
 - Condiment pumps for bulk dispensing
 - Various hotel pan configurations
 - Cups, lids and coffee cup sleeves
 - ... and so much more
- Enclosed base for storage at the point of usage.
- 8" deep front shelf
- Hinged doors
- (1) door lock per door
- (4) locking, non-marking casters
- (4) corner bumpers
- Integrated handles
- All welded 304 stainless steel construction
- NSF approved
- Made in the U.S.A.



Product Specification:

Steril-Sil model #E1-ENC Enclosed Mobile Counter. Works exclusively with the Steril-Sil E1 System allowing for a wide range of configurable dispensing using the E1 inserts. Includes an enclosed storage area with hinged doors, (1) door lock per door, four (4) corner bumpers, four (4) locking, non-marking casters and an 8" deep front shelf. All welded 304 stainless steel construction. Made in the U.S.A.

Notes:

Steril-Sil Company, LLC
 Phone: 800-784-5537
 Fax: 617-739-5063
 Email: quotes@sterilsil.com
 www.sterilsil.com



E1 System Mobile Counters (cont'd)



E1-ENC24-2V



E1-ENC36-3V



E1-ENC36-1V1HP



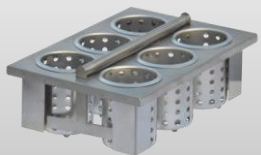
E1-ENC48-4V

E1 System Mobile Counters

Designed for use with the E1 Silverware Handling System

| Model # | Description | Overall Dimensions | | | | | Capacity | |
|----------------|--|---------------------|--------------------|----------------|----------------|---------------------|------------|------------|
| | | Length (w/ bumpers) | Depth (w/ bumpers) | Counter Height | Overall Height | Door Opening Height | E1 Inserts | Hotel Pans |
| E1-ENC24-2V | 24" mobile counter holds (2) E1 inserts vertically | 25.25" | 24.75" | 32.00" | 41.00" | 22.00" | 2 | 0 |
| E1-ENC36-3V | 36" mobile counter cart holds (3) E1 inserts vertically | 35.25" | 24.75" | 32.00" | 41.00" | 22.00" | 3 | 0 |
| E1-ENC36-1V1HP | 36" mobile counter holds (1) E1 inserts vertically and (1) full-size hotel pan and any fractional combination using adapter bars | 35.25" | 24.75" | 32.00" | 41.00" | 22.00" | 1 | 1 |
| E1-ENC48-4V | 48" mobile counter holds (4) E1 inserts vertically | 48.00" | 24.75" | 32.00" | 41.00" | 22.00" | 4 | 0 |

Available Accessories:



E1-BS6OE-SS
E1 Drop-In Silverware Basket



E1-2N5-1VH
E1 Dual Napkin Dispenser



E1-CND2-1VH
E1 Condiment Pump Insert



E1-RCS-1V
E1 Trash/Recycling Insert

See the E1 System Inserts page for additional options and details