



Item#: _____
 Quantity: _____
 Model #: E1-DDA- _____
 Project #: _____

E1 Angled Drop-In Dispensers



Model #: E1-DDA-2V

(Drop-in silverware baskets sold separately)

Patent Pending

Standard Features:

- Angled drop-in countertop dispenser for the E1 Silverware Handling System
- Works exclusively with the Steril-Sil E1 Silverware Handling System
- Enclosed bottom contains debris and spills
- No-flange design; the stepped-in bottom on four sides allows the unit to drop into a countertop and rest on top without the use of a flange for a clean finished look
- All welded 304 stainless steel construction
- NSF approved
- Made in the U.S.A.



Product Specification:

Steril-Sil model #E1-DDA- Angled Drop-In Dispenser. Works exclusively with the Steril-Sil E1 Silverware Handling System and accepts Steril-Sil E1 Inserts. Unit includes an enclosed bottom to contain debris and spills. No-flange design; unit rests on countertop without the use of a flange for a clean finished look. All welded 304 stainless steel construction. NSF approved. Made in the U.S.A.

Notes:

Steril-Sil Company, LLC

Phone: 800-784-5537
 Fax: 617-739-5063
 Email: quotes@sterilsil.com
 www.sterilsil.com



E1 Angled Drop-In Dispensers (cont'd)



Model #: E1-DDA-2V



Model #: E1-DDA-3V

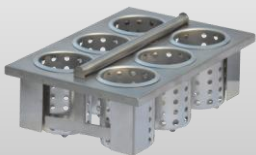
E1 Angled Drop-In Dispenser

Designed for use with Steril-Sil Silverware Handling System

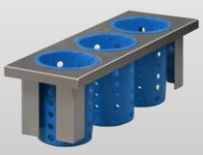
Model #	Description	Overall Dimensions			Cutout Dimensions*	
		Length	Width	Height	Length	Width
E1-DDA-2V	2-hole E1 drop-in angled countertop dispenser with solid bottom holds (2) E1 inserts vertically	23.25"	16.50"	9.50"	21.75"	14.75"
E1-DDA-3V	3-hole E1 drop-in angled countertop dispenser with solid bottom holds (3) E1 inserts vertically	34.75"	16.50"	9.50"	33.00"	14.75"

*** IMPORTANT:** Verify all cutout dimensions for changes with factory prior to countertop cutout

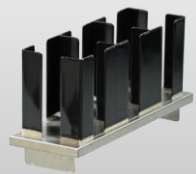
Available Accessories:



E1-BS60E-SS
E1 Drop-In Silverware basket



E1-BS30E-RP-BLUE
E1 Half-Size Cylinder Insert



E1-CLH-1VH
E1 Cup & Lid Insert



E1-1N5-2SD-1VH
E1 Napkin and Straw Dispenser