



Item#: \_\_\_\_\_  
 Quantity: \_\_\_\_\_  
 Model #: E1-DDF-  \_\_\_\_\_  
 Project #: \_\_\_\_\_

## E1 Flush-Mount Drop-In Dispensers



**Model #: E1-DDF-1VH**  
 With drop-in silverware basket  
 (sold separately)

Patent Pending

**Standard Features:**

- Flush-mount drop-in countertop dispenser for the E1 Silverware Handling System
- Use as a liner to protect counter and countertop from scratching and water damage
- For use in stainless steel, laminate, 3cm quartz and solid surface countertops
- Works exclusively with the Steril-Sil E1 System
- Enclosed bottom contains debris and spills
- 1" flange holds the dispenser in place while protecting the countertop edge from scratching and chipping
- All welded 304 stainless steel construction
- NSF approved
- Made in the U.S.A.



For flush mounting all E1 System inserts in countertops

**Product Specification:**  
 Steril-Sil model #E1-DDF-  Flush-Mount Drop-In Dispenser. Works exclusively with the Steril-Sil E1 Silverware Handling System and accepts Steril-Sil E1 Inserts. Unit includes an enclosed base to contain debris and spills. All welded 304 stainless steel construction. NSF approved. Made in the U.S.A.

**Notes:**

**Steril-Sil Company, LLC**  
 Phone: 800-784-5537  
 Fax: 617-739-5063  
 Email: quotes@sterilsil.com  
 www.sterilsil.com



## E1 Flush-Mount Drop-In Dispensers (cont'd)



E1-DDF-05VH

E1-DDF-1VH

E1-DDF-2V

E1-DDF-3V

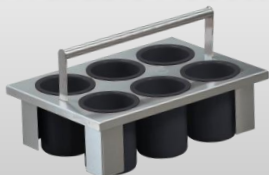
**\* IMPORTANT:** Verify all cutout dimensions for manufacturing changes with delivered units prior to countertop cutout

### E1 Flush-Mount Drop-In Dispensers

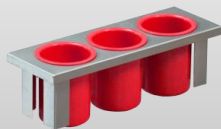
Designed for use with Steril-Sil Silverware Handling System

Model #	Description	Overall Dimensions			Cutout Dimensions*	
		Length	Depth	Height	Length	Width
E1-DDF-05VH	½ size E1 flush-mount drop-in countertop dispenser with solid bottom holds one half-size (½) E1 insert horizontally or vertically	6.25"	17.25"	6.00"	5.00"	15.50"
E1-DDF-1VH	1-hole E1 flush-mount drop-in countertop dispenser with solid bottom holds one (1) E1 insert horizontally or vertically	12.00"	17.25"	6.00"	10.50"	15.50"
E1-DDF-2V	2-hole E1 flush-mount drop-in countertop dispenser with solid bottom holds two (2) E1 inserts vertically	23.00"	17.25"	6.00"	21.50"	15.50"
E1-DDF-3V	3-hole E1 flush-mount drop-in countertop dispenser with solid bottom holds three (3) E1 inserts vertically	33.50"	17.25"	6.00"	32.75"	15.50"

#### Available Accessories:



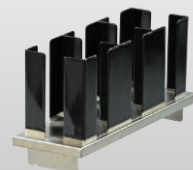
**E1-B56OE-PC-BLACK**  
E1 Basket with Containers



**E1-B53OE-PC-RED**  
E1 Half-Size Container Inset



**E1-N5D-1VH**  
E1 Dual Napkin Dispenser



**E1-CLH-1VH**  
E1 Cup & Lid Inset