



Item#: \_\_\_\_\_  
 Quantity: \_\_\_\_\_  
 Model #: E1-SK-2  
 Project #: \_\_\_\_\_

## E1 Two-Basket Silverware Soak Sink



**Standard Features:**

- Two-basket silverware soak sink
- Integrated handle-lift holds the Steril-Sil E1-BS60E Silverware Basket handle in the upright position above the soak solution for better employee safety and for easy lift-out while in the soak solution
- Lever waste drain
- Non-marking casters
- All welded 14-gauge, 304 stainless steel construction
- NSF approved
- Made in the U.S.A.



**Model #: E1-SK-2**

Patent Pending

**Product Specification:**

Steril-Sil model #E1-SK-2 Two-Basket Silverware Soak Sink. Works exclusively with the Steril-Sil E1 Silverware Handling System and holds two (2) Steril-Sil E1-BS60E Drop-In Silverware Baskets. Integrated handle-lift holds silverware basket handles in the upright position above the soak solution for better employee safety. Includes four (4) non-marking casters and lever drain. All welded 14-gauge, 304 stainless steel construction. Overall dimensions are 23.50" x 28.50" x 21" high. NSF approved. Made in the U.S.A.

**Notes:**

**Steril-Sil Company, LLC**

Phone: 800-784-5537  
 Fax: 617-739-5063  
 Email: quotes@sterilsil.com  
 www.sterilsil.com



# E1 Two-Basket Silverware Soak Sink (cont'd)



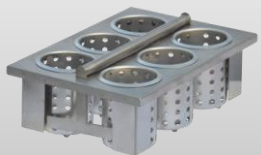
Model #: E1-SK-2

## E1 Two-Basket Silverware Soak Sink

Designed for use with Steril-Sil E1 Silverware Handling System

Model	Description	Length	Width	Height
E1-SK-2	E1 System 2-basket soak sink with integrated basket handle lifts for E1 System silverware baskets, handles extend above the soak solution for better employee safety	23.50"	28.50"	21.00"

### Available Accessories:



**E1-BS6OE-SS**  
E1 Drop-In Silverware basket



**E1-STE-2H**  
E1 System Sorting Table



**E1-BSC-16**  
E1 Basket Storage Cart



**E1-CRT24-2V**  
24" E1 System Open Cart